



CONSTRUCTION

PRODUCT RANGE 2021



Levellers
Construction Grouts
Admixtures





TruLevel
**LEVELLING
& SCREEDS**
PRODUCT RANGE 2021

Cementitious





TruLevel EconoScreed Rapid

Rapid setting & hardening, high early strength screed.

EconoScreed Rapid is a rapid hardening and drying, high early strength, slump-free and shrinkage compensated screed for flooring.

ADVANTAGES

- Light traffic in 2 hrs
- Up to 200mm
- Shrinkage compensated
- Excellent adhesion

COMPRESSIVE STRENGTH Mpa

1 Day	>30
7 Days	>50
28 Days	>65

FLEXURAL STRENGTH Mpa

1 Day	>5
7 Days	>8
28 Days	>10

QUICK REF GUIDE

Colour	Grey
Area	Internal / External
Coverage	2m² at 5mm
Dry Time	2 Hours
Size- Code	20KG - RL7187-20



TruLevel BulkFill UT

High build, self levelling, cementitious flooring underlay

TruLevel Bulkfill UT is a high build self levelling compound with excellent flow properties formulated for self-levelling differences 70 mm in thickness on new or existing internal concrete substrates

ADVANTAGES

- Excellent flow
- Up to 70mm
- Pumpable
- CT-C30-F7 acc. EN 13813

COMPRESSIVE STRENGTH Mpa

1 Day	>15
7 Days	>20
28 Days	>30

FLEXURAL STRENGTH Mpa

1 Day	>3
7 Days	>5
28 Days	>7

QUICK REF GUIDE

Colour	Grey
Area	Internal
Coverage	2.4m² at 5mm
Dry Time	2-3 Hours
Size- Code	20KG - 430081



TruLevel Econopro

Self-smoothing general purpose cementitious underlay

Tru Level Econo Pro is a specially formulated floor levelling compound designed to achieve a smooth flat surface for application of internal carpet, tiles, vinyl and floating floor systems.

ADVANTAGES

- Excellent flow
- 2-30mm per application
- Large areas
- Eliminate sand screeds

COMPRESSIVE STRENGTH Mpa

1 Day	>10
7 Days	>25
28 Days	>30

FLEXURAL STRENGTH Mpa

1 Day	>3
7 Days	>8
28 Days	>9.5

QUICK REF GUIDE

Colour	Grey
Area	Internal
Coverage	2.4m² at 5mm
Dry Time	3-4 Hrs
Size- Code	20KG - 430074



TruLevel Econopro Plus

Resilient and textile flooring cementitious underlay

Tru Level Econo Pro Plus is a specially formulated floor levelling compound designed to achieve a smooth flat surface for application of internal carpet, tiles, vinyl and floating floor systems.

ADVANTAGES

- Excellent flow
- 1-20mm per application
- Large areas
- Eliminate sand screeds

COMPRESSIVE STRENGTH Mpa

1 Day	>10
7 Days	>25
28 Days	>30

FLEXURAL STRENGTH Mpa

1 Day	>3
7 Days	>8
28 Days	>9.5

QUICK REF GUIDE

Colour	Grey
Area	Internal
Coverage	2.4m² at 5mm
Dry Time	3-4 Hrs
Size- Code	20KG - 430074



TruLevel LightWeight

High Build Self-Leveling Cementitious Flooring

RLA Tru Level Lightweight is a specially formulated polymer modified floor levelling compound with designed to achieve a high build flat surface for application of carpets, carpet tiles, ceramic tiles & sheet vinyl.

QUICK REF GUIDE

Colour	Light grey
Area	Internal
Coverage	1.4m² at 10mm
Dry Time	60-90 minutes
Size- Code	20KG - RL9509-20

ADVANTAGES

- Low density, light weight
- 10-200mm per application
- Flowable / Pumpable
- Foot traffic 4-6 hrs

COMPRESSIVE STRENGTH Mpa

1 Day	>10
7 Days	>25
28 Days	>30

FLEXURAL STRENGTH Mpa

1 Day	>3
7 Days	>8
28 Days	>9



TruLevel TuffTop

Heavy duty, high performance internal/ external self levelling cementitious overlay

Tuff Top is rapid drying self-levelling compound with excellent flow properties on new or existing internal/external

QUICK REF GUIDE

Colour	Grey
Area	Internal / External
Coverage	4m² at 3mm
Dry Time	3 Hours
Size- Code	20KG - 430090

ADVANTAGES

- Timber and concrete
- 5 to 30mm
- Shrinkage compensated
- Excellent adhesion

COMPRESSIVE STRENGTH Mpa

1 Day	>10
7 Days	>35
28 Days	>43

FLEXURAL STRENGTH Mpa

1 Day	>3
7 Days	>6
28 Days	>8



TruLevel RapidPatch

Rapid hardening and drying high strength repair mortar

Tru Level Rapid Patch is a polymer modified, rapid hardening and drying, high early strength, rapid drying, slump- free and shrinkage compensated repair mortar for vertical and horizontal flooring.

QUICK REF GUIDE

Colour	Grey
Area	Internal / External
Coverage	4m² at 3mm
Dry Time	45 min
Size- Code	20KG - 430084

ADVANTAGES

- Rapid drying
- Upto 100mm
- Trafficable 45min
- Excellent adhesion

COMPRESSIVE STRENGTH Mpa

1 Day	>25
7 Days	>32
28 Days	>45

FLEXURAL STRENGTH Mpa

1 Day	>5
7 Days	>8
28 Days	>10



TruLevel FineFinish

Smooth finishing cement based compound

Tru Level Fine Finish is polymer cement based smoothing compound used to provide a smooth finish to a variety of internal surfaces prior to the application of floor coverings such as vinyl, ceramic tiles, carpet and marble tiles.

QUICK REF GUIDE

Colour	Grey
Area	Internal
Coverage	10m² at 1mm (5Kg)
Dry Time	45 min
Size- Code	10KG - 206067

ADVANTAGES

- No priming
- Skimcoat finish
- Floorcoverings 15min
- Excellent adhesion

COMPRESSIVE STRENGTH Mpa

1 Day	>25
7 Days	>32
28 Days	>45

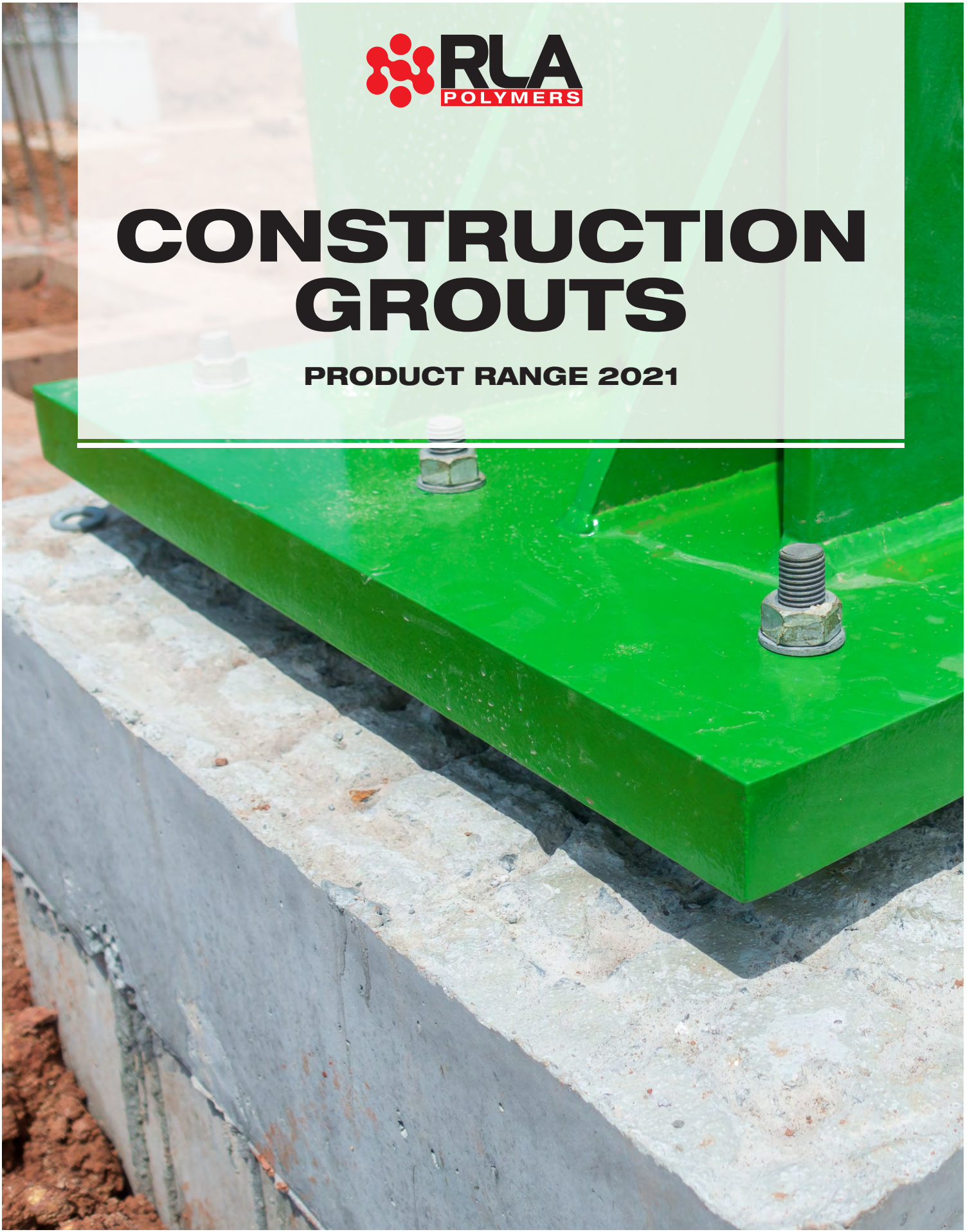
FLEXURAL STRENGTH Mpa

1 Day	>5
7 Days	>8
28 Days	>10



CONSTRUCTION GROUTS

PRODUCT RANGE 2021



Cementitious
Epoxy
Epoxy Anchors





PenaFlow PanelGrout

General purpose non shrink Class A Cementitious grout

Penaflow Panel Grout is a Class A construction grout based on a blend of Portland cement, high quality graded aggregates and additives, which control expansion whilst the grout is in a plastic state..

ADVANTAGES

- Anchor bolt filling
- 20 to 150mm
- Block work filling
- Shrinkage compensated

COMPRESSIVE STRENGTH Mpa

1 Day	>20
7 Days	>35
28 Days	>55

FLEXURAL STRENGTH Mpa

1 Day	>1.5
7 Days	>8.5
28 Days	>9.5

QUICK REF GUIDE

Colour	Grey
Area	Internal / External
Yield	11L per 20Kg
Dry Time	3-4 Hours
Size- Code	20KG - 204039



PenaFlow UW Grout

High performance for under water applications

Penaflow Grout UW is a high performance construction grout based on a blend of Portland cement, high quality graded aggregates and additives, which control expansion whilst the grout is in a plastic state.

ADVANTAGES

- Dam Walls
- Anchor bolt filling
- Displaces water
- Durable

COMPRESSIVE STRENGTH Mpa

1 Day	>20
7 Days	>40
28 Days	>55

FLEXURAL STRENGTH Mpa

1 Day	>1.5
7 Days	>8.5
28 Days	>9.5

QUICK REF GUIDE

Colour	Grey
Area	Internal / External
Yield	11L per 20Kg
Dry Time	3-4 Hrs
Size- Code	20KG - 206060



PenaFlow GP Grout

General purpose, high performance non shrink, class A cementitious grout

Class A construction grout based on a blend of Portland cement, high quality graded aggregates and additives, which control expansion whilst the grout is in a plastic state.

ADVANTAGES

- Dam Walls
- Anchor bolt filling
- Displaces water
- Durable

COMPRESSIVE STRENGTH Mpa

1 Day	>32
7 Days	>50
28 Days	>70

FLEXURAL STRENGTH Mpa

1 Day	>4.3
7 Days	>8.5
28 Days	>9.8

QUICK REF GUIDE

Colour	Grey
Area	Internal / External
Yield	11L per 20Kg
Dry Time	3-4 Hours
Size- Code	20KG - 206060



PenaTech LA Grout

High performance micro concrete cementitious grout, designed for large or deep pour applications.

High performance, micro concrete, high flow (Class C) cementitious grout designed for large or deep pour applications upto 850mm

ADVANTAGES

- Class C
- Flowable or fluid
- Under pinning
- Excellent flow
- Deep pour applications

COMPRESSIVE STRENGTH Mpa

1 Day	>22
7 Days	>59
28 Days	>67

FLEXURAL STRENGTH Mpa

1 Day	>3.9
7 Days	>9.8
28 Days	>10.5

QUICK REF GUIDE

Colour	Grey
Area	Internal / External
Yield	11L per 20Kg
Dry Time	4-5 Hours
Size- Code	20KG - 206061



PenaTech HES Grout

High early strength Class C, Fast setting , non shrink construction grout

Penatech HES Grout is a high early strength gain, flowable, shrinkage compensated, Class C grout for use where rapid strength gain is required.

ADVANTAGES

- Bridge bearing panels
- Heavy Duty
- High early strength
- Balustrades

COMPRESSIVE STRENGTH Mpa

1 Day	>60
7 Days	>75
28 Days	>85

FLEXURAL STRENGTH Mpa

1 Day	>5.3
7 Days	>8.8
28 Days	>9.8

QUICK REF GUIDE

Colour	Grey
Area	Internal / External
Yield	11L per 20KG
Dry Time	20-30 Minutes
Size- Code	20KG - 205047



PenaTech HS PLUS Grout

High strength Class C, cementitious grout

Penatech HS Grout is a high strength, precision Class C grout. Non shrink dual expansion compensates for shrinkage in both the plastic and hardened state.

ADVANTAGES

- High early strength
- High ultimate strength
- Can be dry packed

COMPRESSIVE STRENGTH Mpa

1 Day	>35
7 Days	>75
28 Days	>85

FLEXURAL STRENGTH Mpa

1 Day	>3.9
7 Days	>7.0
28 Days	>9.5

QUICK REF GUIDE

Colour	Grey
Area	Internal / External
Yield	11L per 20KG
Dry Time	3-4 Hours
Size- Code	20KG - 206051



PenaTech GP Grout

High performance , non shrink class C

Penaflow GP Grout is a Class C construction grout based on a blend of Portland cement, high quality graded aggregates and additives, which control expansion whilst the grout is in a plastic and hardened state.

ADVANTAGES

- Pumpable
- 10mm to 150mm
- Block work core filling

COMPRESSIVE STRENGTH Mpa

1 Day	>30
7 Days	>50
28 Days	>60

FLEXURAL STRENGTH Mpa

1 Day	>3.0
7 Days	>5.0
28 Days	>7.0

QUICK REF GUIDE

Colour	Light grey
Area	Internal / External
Yield	11L per 20KG
Dry Time	3-4 Hours
Size- Code	20KG - 206062



PenaTech HS Plus Grout

Very high ultimate strength, class C, cementitious grout

Penaflow HS Plus Grout is a very high performance, precision grout with high ultimate strength dual expansion. Class C compensated for shrinkage

ADVANTAGES

- Pumpable
- 10mm to 150mm
- Block work core filling

COMPRESSIVE STRENGTH Mpa

1 Day	>45
7 Days	>80
28 Days	>95

FLEXURAL STRENGTH Mpa

1 Day	>3.9
7 Days	>7.0
28 Days	>9.5

QUICK REF GUIDE

Colour	Light grey
Area	Internal / External
Yield	11L per 20KG
Dry Time	3-4 Hours
Size- Code	20KG - 206052



PenaTech PT Cable Grout

High performance pumpable/flowable Class C cementitious grout, designed for post tension/cables & ducts.

Penatech PT Grout is a Class C dual expansion grout which compensates for shrinkage in the plastic & hardened state, Excellent flow retention, for large application and thicknesses

ADVANTAGES

- Bridge bearing panels
- Heavy Duty
- High early strength
- Post tension ducts/cables
- Crack filling

COMPRESSIVE STRENGTH Mpa

1 Day	>30
7 Days	>55
28 Days	>65

FLEXURAL STRENGTH Mpa

1 Day	>6.1
7 Days	>9.8
28 Days	>10.5

QUICK REF GUIDE

Colour	Grey
Area	Internal / External
Yield	14L per 20Kg
Dry Time	4-6 Hours
Size- Code	20KG - 205047

Construction Grouts Epoxy

Epigrout LV Kit

Low viscosity crack injection epoxy grout

Epigrout LV is a low viscosity epoxy grout based on specially selected epoxy resins and hardeners to produce a highly fluid grout for injection into cracks in masonry and concrete.

ADVANTAGES

- Flow viscosity
- Easy application
- High Strength
- Excellent adhesion

COMPRESSIVE STRENGTH Mpa

28 Days	>70
---------	-----

TENSILE STRENGTH Mpa

28 Days	>14
---------	-----

QUICK REF GUIDE

Colour	Clear
Area	Internal / External
Mixing ratio	2:1
Dry Time	45-60 minutes
Size- Code	1.5L KIT - 252031



Epigrout S Kit

High performance, high strength, fluid epoxy grout

Epigrout S is a two component, high performance, pre filled epoxy grout, suitable for use as a pourable or fluid grouting material. Can be applied underwater and is chemical resistant.

ADVANTAGES

- 100% solid epoxy
- Bonds to damp services
- High flow properties
- Grouting 5-120mm
- High chemical resistance

COMPRESSIVE STRENGTH Mpa

1 Day	>65
7 Days	>105
28 Days	>115

FLEXURAL STRENGTH Mpa

1 Day	>20
7 Days	>27
28 Days	>30

QUICK REF GUIDE

Colour	Light grey
Area	Internal / External
Coverage	15m² @ 1mm
Dry Time	40-45 Min - unfilled 60-80 Min - filled
Size- Code	15L - 222075





Anchorbolt TC

Twin Cartridge, High Strength Epoxy Anchoring Grout.

Anchorbolt TC is a gun applied, high strength epoxy paste for anchoring fixings, into concrete or as a general purpose adhesive. Best results are achieved when deformed bars such as ribbed steel reinforcement or threaded rods are used.

ADVANTAGES

- Anchoring Fixings
- Concrete repairs
- As a general purpose strong adhesive

USES

- High strength
- Excellent adhesion
- Moisture tolerant

QUICK REF GUIDE

Colour	Light grey
Area	Internal / External
Dry Time	24-36 Hours
Size- Code	650mL - 252031



Anchorbolt EP

Rapid hardening, high strength epoxy repair mortar

Anchorbolt EP is a high strength epoxy paste for anchoring fixings into concrete and use as a general purpose adhesive.

Anchorbolt EP is particularly suited for bonding precast concrete components to each other. Final compressive strength >95Mpa

ADVANTAGES

- High strength
- Durability
- Easy application
- Suitable for damp surfaces

USES

- Chemical anchoring
- Epoxy adhesive
- Concrete repair
- Bonding new to old concrete

QUICK REF GUIDE

Colour	Light grey
Area	Internal / External
Dry Time	45-55 Minutes
Size- Code	6L - 252030

**For the
Ultimate
Anchoring
Strength**

Anchorbolt TC



CONCRETE REPAIR

PRODUCT RANGE 2021



Cementitious





Fairing Coat Mortar

Cementitious fairing coat for pre-cast & off-form concrete.

Fairing Coat Mortar is a fine textured, fast setting formulated for repair of damaged concrete where only a thin layer is required.

ADVANTAGES

- Fast setting
- Smooth textured surface
- Excellent bond to concrete

USES

- 1 - 5mm in a single application.
- Over surface imperfections
- Repair to defects in concrete
- For use of vertical application

QUICK REF GUIDE

Colour	Grey Off white (MOQ) White (MOQ)
Area	Internal / External
Coverage	14m² @ 1mm
Dry Time	25-35min Minutes
Size- Code	20KG - 305075



PenaPatch Panel LW

High build, polymer modified, fire rated, light weight repair mortar.

PenaPatch Panel LW is a fine filled fire rated, polymer modified, cementitious mortar, specifically formulated to provide cover for joiner plates in tilt slab or pre-cast construction.

ADVANTAGES

- Fast drying
- Finishes off to a smooth surface
- Eliminates the need for formwork

USES

- Patching repairs in pre-cast panel
- 100mm for vertical applications
- General high build up repairs

QUICK REF GUIDE

Colour	Grey Off white (MOQ) White (MOQ)
Area	Internal / External
Coverage	1m² @ 15mm
Dry Time	120min Minutes
Size- Code	10KG - 306101



PenaPatch HighBuild HB Repair Mortar

High build, low-medium weight, high strength polymer modified structural repair mortar grout.

PenaPatch High Build HB is a high strength; high build shrinkage compensated polymer modified repair mortar. Ultimate compressive strength and high abrasion resistance

ADVANTAGES

- Fast drying
- Can be applied by dry or wet process,
- Eliminates the need for formwork

USES

- High build repairs for vertical, overhead and horizontal repairs
- Repairs to spalled or deteriorated concrete

QUICK REF GUIDE

Colour	Light grey
Area	Internal / External
Coverage	1m² @ 15mm
Dry Time	90min Minutes
Size- Code	20KG - 306080



PenaPatch Structural HB50

High build, medium weight, high strength polymer Modified structural repair mortar grout.

PenaPatch HB50 is a high strength, high build, medium weight shrinkage compensated structural repair mortar

ADVANTAGES

- High ultimate compressive strength
- High strength and high abrasion resistance
- Exceptional bond strength to concrete substrates

USES

- High build repair applications 5mm to 80mm for vertical surfaces
- Repairs to spalled or deteriorated concrete

QUICK REF GUIDE

Colour	Light grey
Area	Internal / External
Coverage	1m² @ 13mm
Dry Time	90min Minutes
Size- Code	20KG - 430086



PenaPatch Structural HB80

High build, high strength polymer modified Structural repair mortar grout.

Penapatch Structural HB80 is a high strength; high build shrinkage compensated structural repair mortar. Structural HB80 is designed to be used for vertical or horizontal applications.

ADVANTAGES

- High ultimate compressive strength
- Dimensionally stable
- Excellent workability

USES

- High build repairs for vertical, overhead and horizontal repairs
- May be applied in verticals up to 160mm in small pockets or with the aid of formwork

QUICK REF GUIDE

Colour	Light grey
Area	Internal / External
Coverage	1m² @ 11mm
Dry Time	45-60 Minutes
Size- Code	20KG - 430082



PenaPatch FastSet C

Fast Setting Repair Mortar for Concrete Pavements and Floors.

Fastset C is a pre-bagged cementitious mortar specifically formulated for the quick and reliable repair to damaged concrete, pavements and industrial floors.

ADVANTAGES

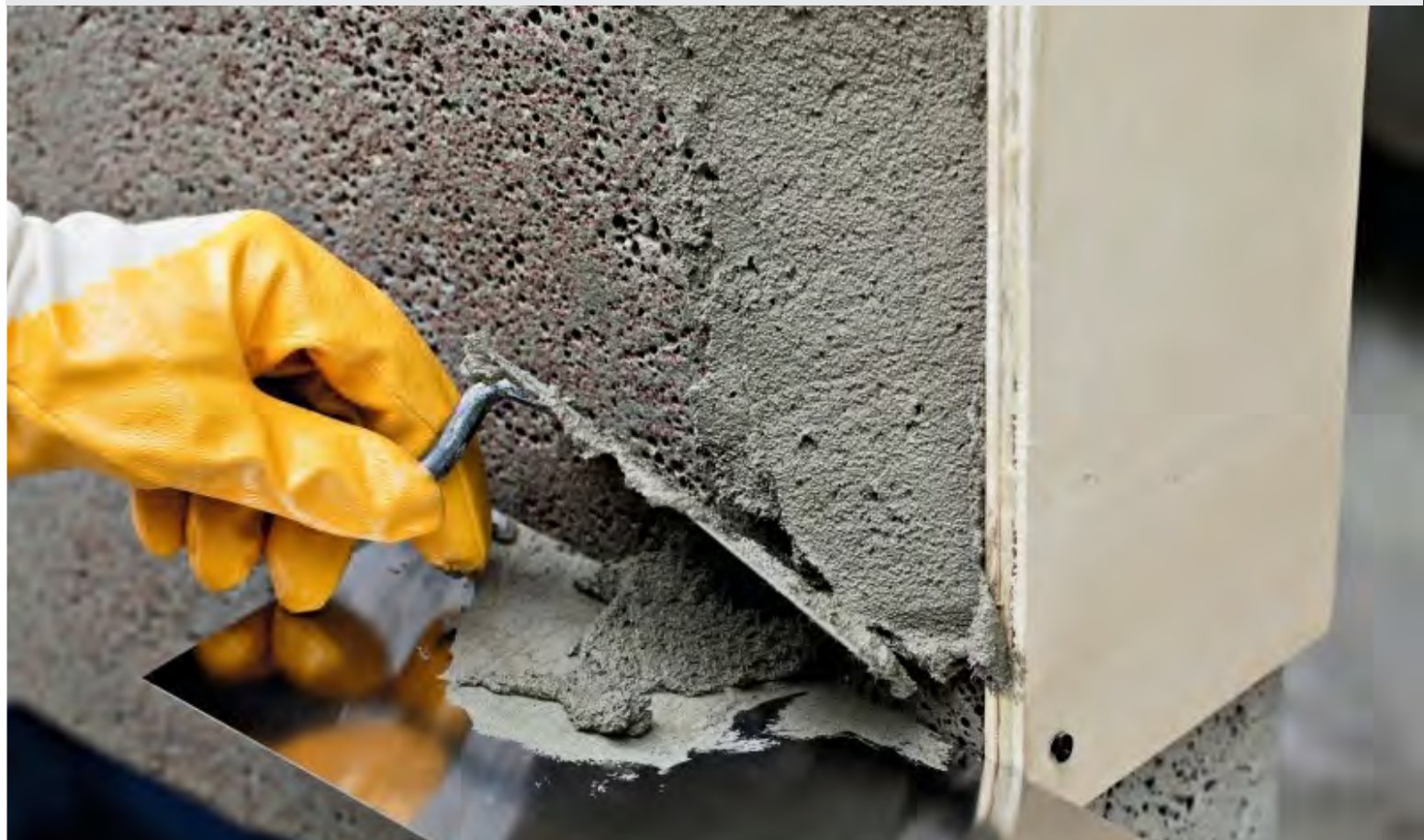
- Accepts pedestrian and vehicular traffic
- Pre-bagged eliminates any on-site mixing variation

USES

- For repairs of both small and large localised patches
- Repairs of concrete floors, overlays and concrete spalling

QUICK REF GUIDE

Colour	Light grey
Area	Internal / External
Coverage	1m² @ 11mm
Dry Time	90-120 Minutes
Size- Code	20KG - 302035





HIGH STRENGTH EPOXY

PRODUCT RANGE 2021

Epoxy



QUICK REF GUIDE

Colour	Light grey
Area	Internal / External
Dry Time	50-60 Minutes
Size- Code	1L Kit - 14509
	4L Kit - 14504
	20L Kit - 14505



MultiPurpose Epoxy

2 Part High Strength Adhesive

MultiPurpose Epoxy Adhesive is a 2-part, non sag, high strength adhesive. It is intended for bonding of a variety of common building materials to vertical and horizontal surfaces.

ADVANTAGES

- Permanent bond 5 – 6 hours
- Non staining on all stone types
- Non sag up to 30 mm build
- Mix ratio 1:1
- Solvent free
- Permanent bond – no performance decrease over time
- High performance properties
- High tensile and compressive strength
- Excellent chemical resistance

USES

- Masonry, precast concrete, stone panels marble, granite, slate, ceramic tiles on walls or overhead in interior or exterior applications,
- Insitu formed concrete, Precast concrete, Grouting/fixing anchor bolts,
- Bonding to metals, Concrete structures, Fabrication of head stones and other decorative stone items,
- Statues and fountains, Pipe and crack repair.





ADMIXTURES

PRODUCT RANGE 2021



Admixtures





B.M.P.

Brick Mortar Plasticiser

B.M.P. is used in Portland cement based mortar applications to obtain improved workability, cohesion, uniformity. Water retention and ease of placement. B.M.P. is also used for improved resistance to freeze/thaw conditions. B.M.P. is suitable for all types or mortars

ADVANTAGES

- Suitable for light coloured mortars
- Improves workability
- Reduces segregation and bleeding
- Improves frost resistance

USES

- Mortar additive to improve workability

QUICK REF GUIDE

Colour	Dark brown liquid
Area	Internal / External
Size- Code	5L - 100002
	20L - 100001



CreteBond

Premium water based polymer

CreteBond is a versatile polymer emulsion used for a wide range of applications in general construction and around the home.

ADVANTAGES

- High solids polymer
- High bond strength
- Water based

USES

- Bonding new to old concrete
- Bonding render and hard plaster
- Sealing internal concrete and masonry surfaces
- Admixture for improving the properties of mortar, render and concrete

QUICK REF GUIDE

Colour	White liquid
Area	Internal / External
Size- Code	1L - 322032
	2L - 322033
	5L - 322031
	20L - 322030



Mortarlox

Concentrated Mortar Plasticiser

Mortarlox is used in Portland cement based mortar applications to obtain improved workability, cohesion, uniformity, water retention and ease of placement.

ADVANTAGES

- Suitable for light coloured mortars
- Concentrated formula
- Reduces segregation and bleeding
- Improves frost resistance

USES

- Mortar additive to improve workability

QUICK REF GUIDE

Colour	Dark brown liquid
Area	Internal / External
Size- Code	5L - 103011
	20L - 103010



No.2 Paste

Paste Water Resisting Admixture

Integral water resisting admixture for concrete and masonry, above or below ground. Recommended for use where coloured mortar or integral floor colours are used.

ADVANTAGES

- Lines the pores in the matrix to prevent water passage through the mortar.
- Improves durability and workability.
- Suitable for after trades.
- Recommended for use where coloured mortar or integral floor colours are used.

USES

- Additive to mortars reducing porosity
- Produces water resistant mortars

QUICK REF GUIDE

Colour	White paste
Area	Internal / External
Size- Code	5L - 110352
	20L - 110350



Waterproofer

Water Resisting Admixture

Integral water resisting admixture for concrete and masonry, above or below ground. Recommended for use where coloured mortar or integral floor colours are used.

ADVANTAGES

- Water Based formula – safe to use.
- Economical solution.
- Improved mix workability.
- Improved durability.
- Suitable for most after trades.

USES

- Improves water resistance.
- Reduce porosity of mortar mix.

QUICK REF GUIDE

Colour	White liquid
Area	Internal / External
Size- Code	5L - 600222
	20L - 600231





**CONSTRUCTION
CURING
COMPOUNDS
and
SURFACE
TREATMENTS**

Water based polymer
Surface Revealing Agent
Curing Compounds

**TRADIES
TRUST**



Curecon A

Curing compound

Curecon A is an acrylic, water based curing compound is a Class D, Type 1 curing compound for use on new concrete that facilitates maximum moisture retention through the curing period to maximise concrete strength & durability. Curecon A is certified to comply with Australian Standard AS 3799.

ADVANTAGES

- Reduces the likelihood of cracking or dusting at the surface.
- Compatible with most after trades
- Easy to use, eliminates messy water curing or polythene film.

QUICK REF GUIDE

Colour	Milky white
Area	Internal / External
Coverage	5m² per litre
Dry time	1.5 - 2 Hours
Size- Code	20L - 164097
	200L - 164098
	1000L - 164095



Curecon AA

Aliphatic Alcohol Curing Compound

CURECON AA is a water based, aliphatic alcohol finishing compound designed for use on plastic (freshly poured and screeded) concrete, to reduce the evaporation of water during finishing operations.

ADVANTAGES

- Reduces evaporation of water from the concrete surface
- Improves finishing properties in adverse weather conditions
- Reduces shrinkage cracking through premature drying

QUICK REF GUIDE

Colour	Pale blue
Area	Internal / External
Coverage	5-7m² per L
Size- Code	20L - 164059
	200L - 164042
	1000L - 164045



Curecon BE

Class Z, Type 3 Curing Compound

Curecon BE is a Class Z, Type 3, water based bitumen membrane curing compound used to retain moisture in concrete for effective curing. Curecon BE can be used for all concrete but is specifically intended for use in mass concrete structures such as roadwork and bridgework, on/off ramps and airport runways.

ADVANTAGES

- Certified with the Australian Standard AS3799-1998.
- Tack free when dry
- Eliminates the need for damp hessian or polythene

QUICK REF GUIDE

Colour	Dark brown
Area	Internal / External
Coverage	5m² per Litre
Dry Time	30min Minutes
Size- Code	200L - 164090
	1000L - 164092



Curecon PW

Smart wax Class A Curing Compound

Curecon PW White is a Type 1-D, Class A, water based wax curing compound used to retain moisture in concrete for effective curing. Formulated for use primarily in the construction of concrete roads, Certified with the Australian Standard AS3799-1998.

ADVANTAGES

- Eliminating moisture loss from exposed surfaces
- Type 1-D, Class A, water based
- Eliminates the need for damp hessian or polythene

QUICK REF GUIDE

Colour	Milky white
Area	Internal / External
Coverage	5m² per Litre
Dry Time	20 Minutes
Size- Code	20L - 164076
	200L - 164073
	1000L - 164077



Curecon W

Premium water based polymer

Curecon W is an acrylic, water based curing compound is a Class D, Type 1 curing compound for use on new concrete that facilitates maximum moisture retention through the curing period to maximise concrete strength & durability. Curecon A is certified to comply with Australian Standard AS 3799 and NSW RTA specifications

ADVANTAGES

- Reduces the likelihood of cracking or dusting at the surface.
- Compatible with most after trades
- Easy to use, eliminates messy water curing or polythene film.

QUICK REF GUIDE

Colour	Milky white
Area	Internal / External
Coverage	5m² per litre
Dry Time	1.5 -2 Hours
Size- Code	20L - 164075 200L - 164074 1000L - 164079



RenderCure

Water based curing compound

Rendacure is a high solids, polymer emulsion specially formulated for the curing of concrete. Rendacure is a fast drying economical curing compound that assists in the curing efficiency of concrete.

ALSO AVAILABLE IN RenderCure concentrate.

ADVANTAGES

- Reduces evaporation of water from the concrete surface
- Improves finishing properties in adverse weather conditions
- Reduces shrinkage cracking through premature drying
- Easy application , fast drying

QUICK REF GUIDE

Colour	Milky white
Area	Internal / External
Coverage	5m² per L
Dry Time	30-40 Minutes
Size- Code	20L - 160005 200L - 160010
Concentrate	20L - 160016 200L - 160015



SimplyReveal

Surface Revealing Agent

Simply Reveal is used for retarding the set of the cement paste on the surface of concrete. This allows the retarded surface to be removed and reveal the aggregate within the mix. Ideal for use to produce exposed aggregate finishes.

ALSO AVAILABLE IN GEL

ADVANTAGES

- For use in horizontal applications.
- Ready to use straight from the drum.
- Improved skid resistance over plain concrete.
- Exposed aggregate
- Fast acting
- Water based

QUICK REF GUIDE

Colour	Light brown
Area	Internal / External
Coverage	4.5m² per L
Size- Code	20L - 156080 200L - 156084
Gel	20L - 156082



Armatite

Water based surface hardening agent

Armatite is a water based dustproofing and surface hardening treatment for concrete floor slabs and pavements.

ADVANTAGES

- Where extra hardness is required.
- When dust proofing required.
- Reduces dust on concrete surfaces

QUICK REF GUIDE

Colour	Light red
Area	Internal / External
Coverage	8-10m² per L
Dry Time	Full 24 Hours
Size- Code	20L - 415470 (MOQ)



Stripform

Oil based form release agent

Stripform is an oil based form release agent specifically formulated for application to timber and steel formwork. Can be applied to ply, timber, steel or polymer formwork.

ADVANTAGES

- Where a defect free finish is required
- When a smooth finish is required
- Clean release
- Ideal for off form concrete
- Non staining

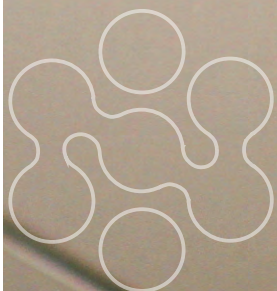
QUICK REF GUIDE

Colour	Pale blue
Area	Internal / External
Coverage	8-10m² per L
Size- Code	20L - 175060 200L - 175065





**CONSTRUCTION
CONTACT
ADHESIVES**



Contact Adhesives

**TRADIES
TRUST**



Spray Grip

Sprayable contact adhesive

Spraygrip sprayable contact adhesive is a high quality solvent based contact adhesive designed for easy application by spraying to bond a wide range of materials. It has excellent bond strength and high heat resistance.

ADVANTAGES

- High bond strength
- Heat resistant
- Excellent spray characteristics

USES

- Laminate benchtops
- Furniture upholstery

QUICK REF GUIDE

Colour	Neutral / Red
Area	Internal
Coverage	6-9m² per L
Dry Time	30 Minutes
Size- Code	20L Neutral- 900015 20L Red - 900041



PolyGrip PS

Pressure sensitive contact adhesive

Pressure sensitive contact adhesive is a high quality solvent based contact adhesive designed for easy application by spraying to bond a wide range of materials. It has excellent bond strength and high heat resistance.

ADVANTAGES

- High bond strength
- Heat resistant

USES

- Laminate benchtops
- Furniture upholstery

QUICK REF GUIDE

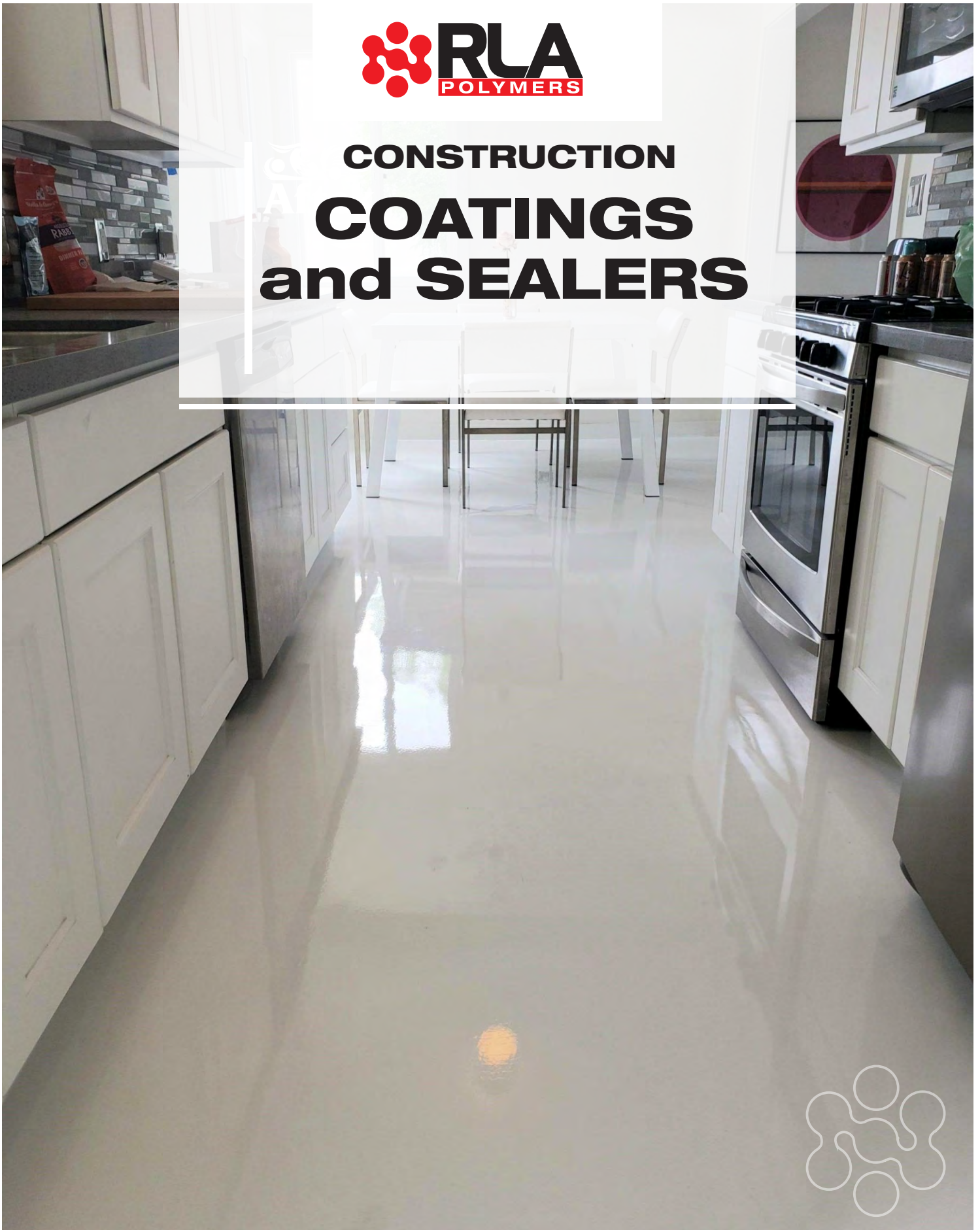
Colour	Neutral
Area	Internal / External
Coverage	6-9m² per L
Dry Time	30 Minutes
Size- Code	20L - 900026 200L - 900027



Spray Grip Available in Neutral or Red



CONSTRUCTION COATINGS and SEALERS



Epilox Range
Polyurethane
Acrylic

**TRADIES
TRUST**



Epilox Binder

2 part high performance epoxy binder system

Epilox Epoxy Binder is a two part solvent free epoxy resin binder system for combining with selected fillers and aggregate to produce epoxy mortars of various consistencies

ADVANTAGES

- 100% solids epoxy
- Solvent free
- Low VOC
- High chemical resistance

USES

- Suitable for use on damp substrates
- Preparing high strength mortar for repair of damaged concrete or masonry in vertical or horizontal surfaces

QUICK REF GUIDE

Colour	Clear
Area	Internal / External
Coverage	1m² per L
Dry Time	30 Minutes
Size- Code	6L Kit - 481025 30L Kit - 490026



Epilox F4 & F6 Fillers

Epilox Fillers F4 Fine, graded blend of sands for general purpose patching mortars and concrete repairs. F4 or F6 fillers may be used in to produce economical grouting or rendering compounds when mixed with the Epilox Binder System.

ADVANTAGES

- Uniform grading
- Clean and dry
- Free of impurities

USES

- As a graded filler for epoxy systems
- Use with Epilox range
- Use with EpiGrout S
- Producing screeds and mortars

QUICK REF GUIDE

Colour	Beige
Area	Internal / External
Size- Code	F4 20kg - 342150 Particle size 0.25-0.4mm F6 20kg - 342151 Particle size 0.5-1.0mm



Epilox HS

Solvent Free Epoxy Coating System

Epilox HS is high performance, 100% solids, three component, and solvent free industrial epoxy coating system available in a range of colours. Available in Koala Grey as pre mixed.

ADVANTAGES

- 100% solids epoxy
- Solvent free
- Resists mildew, mould and bacterial growth
- Chemical resistant

USES

- Heavy duty industrial floors
- Decorative coating
- Can be use with flake floor system

QUICK REF GUIDE

Colour	Neutral / Koala Grey
Area	Internal / External
Coverage	6-8m² per L
Foot traffic	24 hrs
Size- Code	Neutral 4.3L Kit-414375 Neutral 15L Kit-414376 Koala Grey 15L Kit - 414380 Colour Pack available upon request



Epilox Thinners

Cleaning solvent

Epilox thinners designed to clean-up tool and thinning of the Epilox range

ADVANTAGES

- Powerful cleaner

USES

- Cleaning tools
- Thinning
- Reducer

QUICK REF GUIDE

Colour	Clear
Size- Code	20L - 481035



Floorthane

Non yellowing polyurethane sealer

Floorthane is a non-yellowing single pack polyurethane, which cures by reaction with moisture in the air to an extremely tough and durable film

ADVANTAGES

- Heavy Duty/Durable
- High solids content
- UV Stable

USES

- Concrete warehouse floors
- Factory floors
- Coating epoxy to eliminate staining and yellowing
- Garages

QUICK REF GUIDE

Colour	Clear
Area	Internal / External
Coverage	5-7m² per L
Dry Time	4-5 Hours
Size- Code	20L - 15567



Acrylic Sealer

High performance clear sealer

Clear Acrylic Sealer is a solvent borne single pack clear acrylic coating. Used as a general-purpose clear coating for concrete substrates. Enhances the colour and appearance of the coated material

ADVANTAGES

- ASTM C-309
- High solids
- UV stable
- Over green concrete

USES

- Seal concrete slabs to protect from oil and grease stain
- Concrete masonry, exposed aggregate, slate and stone.
- to seal over RLA Traffic Pave

QUICK REF GUIDE

Colour	Neutral
Area	Internal / External
Coverage	6-8m² per L
Dry Time	1 Hour
Size- Code	4L - 999728 20L - 999725

Floorthane

Non yellowing Polyurethane sealer



CONSTRUCTION PRIMERS & ADDITIVES

Epilox Range
Polyurethane
Acrylic

**TRADIES
TRUST**



Rendergrip A

Curing Compound and Primer

Rendergrip A is a milky white, single component acrylic emulsion. Rendergrip A is the recommended primer, bonding agent and curing compound for use with RLA's range of concrete repair systems.

ADVANTAGES

- Water based
- Solvent free
- Low VOC
- High chemical resistance

USES

- Bonding new to old concrete
- Sealing concrete surfaces
- For use in vertical, horizontal or overhead applications
- Primer for RLA range of mortars

QUICK REF GUIDE

Colour	Milky White
Area	Internal / External
Coverage	5m² per L
Dry Time	30 Minutes
Size- Code	5L - 320015 20L - 32005



Rendergrip B

Bonding Agent and Primer

Rendergrip B is a thixotropic acrylic bonding agent and primer as part of Aftek's repair compound package. Rendergrip B is specifically used where a high build repair mortar is required.

ADVANTAGES

- Ready to Use
- Water Based
- Easy Application

USES

- Primer for prior to use of Penapatch High build repair mortars.

QUICK REF GUIDE

Colour	Milky white
Area	Internal / External
Coverage	5m² per L
Dry Time	30 Minutes
Size- Code	5L - 322080 20L - 322065



Zinc Primer

Extremely durable zinc based epoxy resin

A single pack zinc rich epoxy primer giving protection on steel reinforcement prior to application of repair mortars.

ADVANTAGES

- Highly durable
- Protects welds/Steel/Metal from rust
- Easy Application

USES

- Long term protection of steel surfaces against rust and corrosion
- Also used for the touchup of galvanised and zinc-alum surfaces after welding
- Part of the RLA / Aftek concrete repair system

QUICK REF GUIDE

Colour	Grey
Area	Internal / External
Coverage	3-5m² per L
Dry Time	30 Minutes
Size- Code	1L - 322080



CONSTRUCTION CONSTRUCTION SEALANTS AND ADHESIVES



Construction Adhesives
MS / HYBRID
Polyurethane
Fire Rated

**TRADIES
TRUST**



UltraGrip

Construction adhesive

UltraGrip Construction Adhesive is a quality synthetic rubber adhesive for the fixing of flooring sheets and wall panelling. UltraGrip tolerates moisture in timber components. Bonds to most commonly used building materials. Suitable for polystyrene.

ADVANTAGES

- Very easy to use
- High strength

USES

- Suitable for polystyrene.
- Bonds to most building material

QUICK REF GUIDE

Colour	Brownish
Area	Internal/External
Tack Free Time	5-10 Minutes
Size- Code	300mL - 900083 850mL - 900033



UltraGrip Premium

Premium adhesive

UltraGrip Premium Construction Adhesive is a high quality synthetic rubber adhesive. This product has been formulated to resist stiffening in cold weather & tolerates moisture in damp timbers. Bonds to most commonly used building materials. Not suitable for polystyrene.

ADVANTAGES

- Good low temperature handling
- High Strength
- Good gap filling properties

USES

- Not suitable for polystyrene.
- Bonds to most building material

QUICK REF GUIDE

Colour	Brown
Area	Internal/External
Tack Free Time	30 Minutes
Size- Code	300mL - 900073 850mL - 900090

SMP Adhesives & Sealants



FlexPro MS

Flexible multipurpose hybrid polymer sealant

FlexPro MS is a one-component sealant based on silane modified polymer, which is moisture cured sealant. It performs good adhesion to most substrates; It is suitable for most of common construction materials, especially to concrete, aluminum, mason, glass, etc. and it is compatible with most of paint systems.

ADVANTAGES

- Paintable
- High strength / Flexible
- Low VOC
- UV stable

USES

- Perimeter sealing around window and door frames
- Concrete expansion joints
- Sealing/bonding in the building & construction industry

QUICK REF GUIDE

Colour	Grey / Black
Area	Internal/External
Tack free	15 Minutes
Size- Code	Grey 600ml - 620620 Blk 600ml - 620621



FlexPro MS-HD

High performance hybrid polymer sealant/adhesive

FlexPro MS-HD is an industrial grade sealant which is based on MS polymer high performance, one part moisturecured, high strength and high modulus. Also, it has high green strength, ideally suitable for industrial application where needs to be fast bonding, higher movement or vibration- absorbed.

ADVANTAGES

- Paintable
- High Strength
- Highly flexible
- Low VOC
- UV stable
- High modulus

USES

- Elastic bonding in vibrating constructions
- Concrete expansion joints
- Sealing/bonding in the building & construction industry
- Body panel adhesive for transport industry ie: caravan, truck & trailers

QUICK REF GUIDE

Colour	Grey / Black / White
Area	Internal/External
Tack Free	30-40 Minutes
Size- Code	Blk 600ml - A620627 Gry 600ml - A620626 Whit 600ml - A620625



FlexPro PU

Polyurethane sealant

Flex-Pro Polyurethane Sealant is a one component high performance, Low modulus construction joint sealant. A moisture curing sealant with high mechanical strength & excellent resistance to weathering.

ADVANTAGES

- Class A
- Paintable
- Low VOC
- ± 25% Flexible

USES

- Construction joints
- Tilt panels

QUICK REF GUIDE

Colour	Grey
Area	Internal / External
Tack Free	1-2 Hours
Size- Code	600ml - 620542



FlexPro 50FC

Fast curing polyurethane sealant/adhesive

FlexPro 50FC is a one part fast cure polyurethane elastomeric sealant that cures via humidity in the air to form a flexible joint for weatherproofing. It has very good adhesion properties to most common building substrates.

ADVANTAGES

- Class A
- Paintable
- Low VOC
- ± 25% Flexible
- High adhesive strength

USES

- Construction joints
- Sealing perimeter joints
- Adhesive for bonding metal to concrete

QUICK REF GUIDE

Colour	Grey / Black / White
Area	Internal / External
Tack free	45 Minutes
Size- Code	Grey 600ml - A1255 Whi 600ml - A1256 BIK 600ml - A1257

Fire Rated Sealants



FirePro FR

Fire rated acrylic sealant

FirePro Fire Rated Intumescent Sealant is a water-based acrylic sealant suitable for use in internal and external expansion joints and for penetrations requiring a fire-resistant seal. FirePro expands when exposed to fire to form an inorganic plug in joints and voids, assisting in the prevention of fire transmission across partitions in a building.

ADVANTAGES

- No priming
- 4 hours fire rated
- Flexible

USES

- Concrete, plasterboard, blockwork, brick walls
- Building services' penetrations pipes, cable trays, conduit and ducts

QUICK REF GUIDE

Colour	Grey / White
Area	Internal / External
Tack free	30 Minutes
Size- Code	Grey - R6841-300mL Grey - R6841-600mL White - R6849-600mL

Mastic



PanelMastic

Coolroom panels

Aftek Panel Mastic is a low odour, non skinning coolroom mastic that is used for sealing joints in coolroom construction. Panel Mastic is taint free and has good slump resistance and can withstand low coolroom temperatures.

ADVANTAGES

- Low Temperature applications
- Permanently flexible
- Strong bond

USES

- Coolroom panels

QUICK REF GUIDE

Colour	Grey / White
Area	Internal / External
Tack Free	Non skinning/drying
Size- Code	Grey - R6841-300mL Grey - R6841-600mL White - R6849-300mL

TRADE TRUSTED ADVICE

The MyRLA app gives you instant access to a nationwide technical & sales force, at your fingertips. To help with project advice, product selection and job support.



MyRLA APP

Project & Product Advice
Usage calculators
Specification services
Data Sheet Downloads
Weekly prizes
& more

T. 1800 242 931

VIC

215 Colchester Rd
(PO Box 147)
Kilsyth VIC 3137

NSW

363 Wentworth Ave
Pendle Hill,
NSW 2145

QLD

57 Fulcrum Street
Richlands
QLD 4077

WA

24 Hanwell Way
Bassendean,
WA 6054

SA

30/32 Park Ave,
Woodville North
SA 5011

www.rlapolymers.com.au